

Air Operated Grease Gun

PGG

Air Operated One Shot Grease Gun

Intermittent grease discharge with every press of trigger

Air Operating Range
40-120 PSI (3-8 BAR)

Pressure Ratio
40:1

Air Compressor Volume
1 cfm/0.026 cubic metre and above

Air Inlet Threaded
1/4" (F)

Each gun supplied with a male quick connect coupler fitting

Available in 2 models

- PGG-1 (Cartridge capacity: 400gm & Bulk 500 cm³)
- PGG-4 (Cartridge capacity: 450gm & Bulk 650 cm³)

FEATURES

DEVELOPS	DELIVERS
4800 PSI (330 BAR)	UPTO 0.90 GM / SHOT (1.30 OZ / MIN.)

SPECIFICATIONS

HANDLE STYLE	Pistol
AIR INLET PRESSURE	40-120 PSI (3-8 BAR) Recommended: 90 PSI (6 BAR)
PRESSURE RATIO	40:1
COMPRESSED AIR VOLUME	1 CFM Minimum
GREASE FILLING OPTIONS	
CARTRIDGE LOADING	Yes
SUCTION FILL	Yes
FILLER PUMP LOADING	Yes*

* For grease guns fitted with bulk loader valve on grease gun head



INTRODUCTION

Please read the instruction manual carefully before using the Air operated Grease Gun. The Gun must be operated, maintained and repaired by an individual familiar with the operating instructions

GENERAL SAFETY INFORMATION

Always wear safety glasses when using a grease gun. Keep work area clean and remove any excess grease from tools, hands, and clothing after use. Do not use grease gun whip hose for other applications or at pressure levels above rated pressures.

CAUTION

Disconnect the Compressed Air line supply before servicing the Gun.

Excess grease, if left on floors, tools, or equipment, can create surfaces that become slippery.

TOOLS NEEDED

14 mm spanner
16 mm spanner
17 mm spanner
Bench vice
Phillips Screwdriver
Cross Screwdriver
Allen Bolt

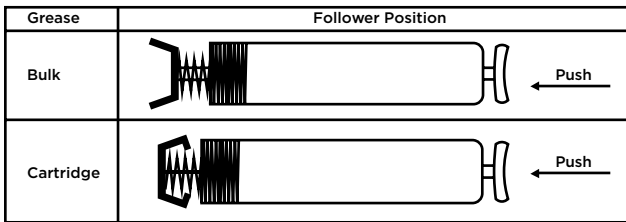
ASSEMBLY & INSTALLATION

GETTING READY TO USE THE AIR POWERED GREASE GUN

Select Follower Position

Note: Refer Figure 1 for correct follower position

HOW TO SELECT FOLLOWER POSITION



Air Supply: Dry air is needed to operate this gun. Make sure FRL (Filter, Regulator, and Lubricator) unit is installed in airline. Moisture in the air will damage the grease gun. The compressor used must have a minimum volume of 1 CFM (0.026 cubic meter). Inlet air supply should have a pressure between 40 - 120 PSI (3-8 BAR). The recommended working pressure is 90 PSI (6 BAR). This grease gun has a 40:1 pressure ratio; i.e. the grease discharge pressure will be 40 times the inlet air pressure.

Lubrication: Like all air equipment, this grease gun needs regular lubrication. To lubricate, add a few drops of oil through the air inlet on the grease gun. It is recommended to use SAE 30 or higher viscosity oil.

Connecting the grease gun to air supply: There are several types of quick connect couplers available in the market. This grease gun comes with one standard male quick connect coupler. The coupler must fit properly onto the female quick connect coupler on the airline. If it does not fit properly, use a coupler that does.

Operating the grease gun trigger: This is a one shot grease gun, whereby there is grease discharge with every press of the trigger. Do not keep the trigger pressed during operation. The trigger must be repeatedly pressed and released while greasing. Also, do not repeat the action too fast, as the piston needs to complete a full cycle before starting a new one.

SETTING UP THE GREASE GUN HEAD

Attach the male quick connect coupler air fitting supplied with the gun onto the air inlet on the die cast handle. The male quick connect coupler air fitting has 1/4" NPT threads and should be threaded into the female hole on the die cast handle using thread sealant. Make sure the connection is tight so that there is no leakage of air. Use PTFE Tape while connecting the air fitting to the air inlet.

CAUTION

Grease or empty cartridge in barrel is under pressure from the internal spring, use caution when removing either end of the barrel.

LOADING GREASE GUN

Removing empty Grease Cartridges

1. Pull back the plunger handle to its maximum extended position and lock it in place .
2. Unthread the grease gun head from barrel assembly by turning it counter clockwise.
3. Remove any empty cartridge from the barrel.

INSTALLING GREASE CARTRIDGES

NOTE: Choose the correct follower position (see figure 1)

1. Make sure the gun is disconnected from the air supply. Pull back the follower rod all the way to the end of the barrel & lock it so that the grease cartridge can be fully inserted.
2. Unthread grease gun head from barrel assembly.
3. Remove the plastic cap from the grease cartridge and insert the open end of the cartridge into the grease gun barrel until the rim of the pull-tab end meets the rim of the grease gun barrel.
4. Remove the pull-tab seal from top of the cartridge and screw tighten the head onto the barrel while keeping at least 2-3 turns open before the barrel is fully tightened.
5. Unlock the plunger rod handle from the end cap.
6. Move the plunger rod forward and backward to remove any trapped air pockets.
7. Connect the air supply and prime the gun by operating the gun by pressing and releasing the trigger until the grease starts coming out of the discharge nozzle.
8. Initial grease discharge may have trapped air. Once the gun has been primed, fully tighten the grease gun head onto the barrel.
9. Push the plunger rod into the barrel for easier maneuverability during use.
10. Connect the grease gun extension and coupler onto the grease gun outlet and it is advisable to use a thread sealant to ensure a leak-proof connection between joints.

NOTE

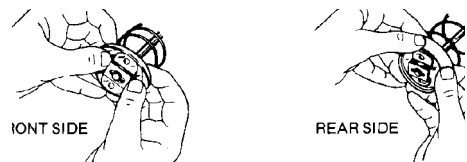
Do not apply excessive torque or over-tighten the grease gun extension as this will apply undue stress to the die cast outlet and may cause it to fracture.

TO CONVERT GUN TO ALLOW FILLING FROM BULK CONTAINER OR FILLER PUMP

1. Unthread the barrel cap from barrel assembly and pull out the follower and spring from barrel.
2. Hold Follower between thumb and fore finger to flip the follower lip from rear to the front side.

NOTE

Always remove any cartridges from the grease gun prior to bulk filling.



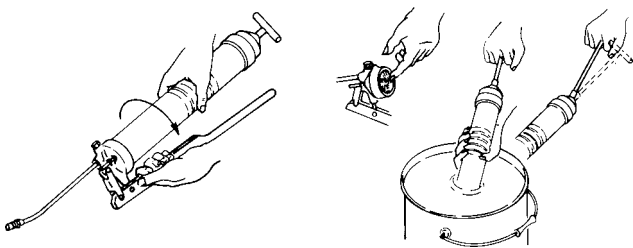
3. Put follower back into barrel and thread tighten the barrel cap & follower assembly with the barrel.

LOADING GREASE GUN USING BULK GREASE

1. Make sure the gun is disconnected from the air supply. Pull back the plunger rod handle all the way to the end of the barrel & lock it.
2. Remove head assembly of grease gun by rotating it in counter-clockwise direction. Release plunger handle and allow the handle to move to its most forward position.
3. Insert the open end of the barrel into the grease.
4. Slowly pull the plunger rod handle while pushing the barrel deep into the grease until the plunger rod is all the way extended.
5. The grease gun barrel should now be filled with grease. Wipe the grease from outside surface of barrel before use.
6. Screw the head of the gun onto the barrel, but do not fully tighten the barrel. For now leave at least 2-3 turns before the barrel is fully tightened.
7. Unlock the plunger rod handle from the end cap.
8. Move the plunger rod forward and backward to force out any trapped air pockets from the connection between the grease gun head and the barrel, which is not fully tightened.
9. Connect the air supply and prime the gun by operating the gun by pressing and releasing the trigger until the grease starts coming out of the discharge nozzle.
10. Initial grease discharge may have trapped air. Once the gun has been primed, fully tighten the grease gun head onto the barrel.
11. Push the plunger rod into the barrel for easier maneuverability during use.
12. Connect the grease gun extension and coupler onto the grease gun outlet and it is advisable to use a thread sealant to ensure a leak-proof connection between joints.

NOTE

Do not apply excessive torque or over-tighten the grease gun extension as this will apply undue stress to the die cast outlet and may cause it to fracture.



LOADING GREASE GUN USING A FILLER PUMP: (FOR MODELS FITTED WITH BULK LOADER VALVE ON GREASE GUN HEAD)

1. Wipe the grease gun's bulk loader clean.
2. Connect the grease gun's bulk loader valve to the bulk loader adapter on the filler pump.
3. Start Operating the pump to fill grease into the barrel. Do not overfill grease as this may result in grease leaking from the joints.

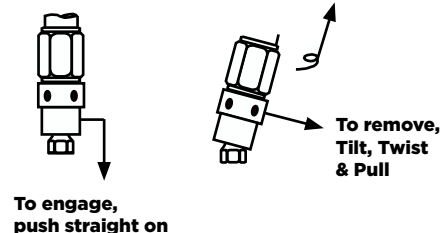
4. Disconnect the grease gun loader adapter from the filler pump. Slightly loosen the grease gun head 2-3 turns.
5. Unlock the plunger rod handle from the end cap.
6. Move the plunger rod forward and backward to force out any trapped air pockets from the connection between the grease gun head and the barrel, which is not fully tightened.
7. Reconnect the air supply and "prime" the system by pressing and releasing the trigger until the grease starts coming out of the discharge nozzle. Initial grease discharge may have trapped air. Once the gun has been primed, fully tighten the grease gun head onto the barrel.
8. Push the plunger rod into the barrel for easier maneuverability during use.
9. Connect the grease gun extension and coupler onto the grease gun outlet and it is advisable to use a thread sealant to ensure a leak-proof connection between joints

NOTE

Do not apply excessive torque or over-tighten the grease gun extension as this will apply undue stress to the die cast outlet and may cause it to fracture.

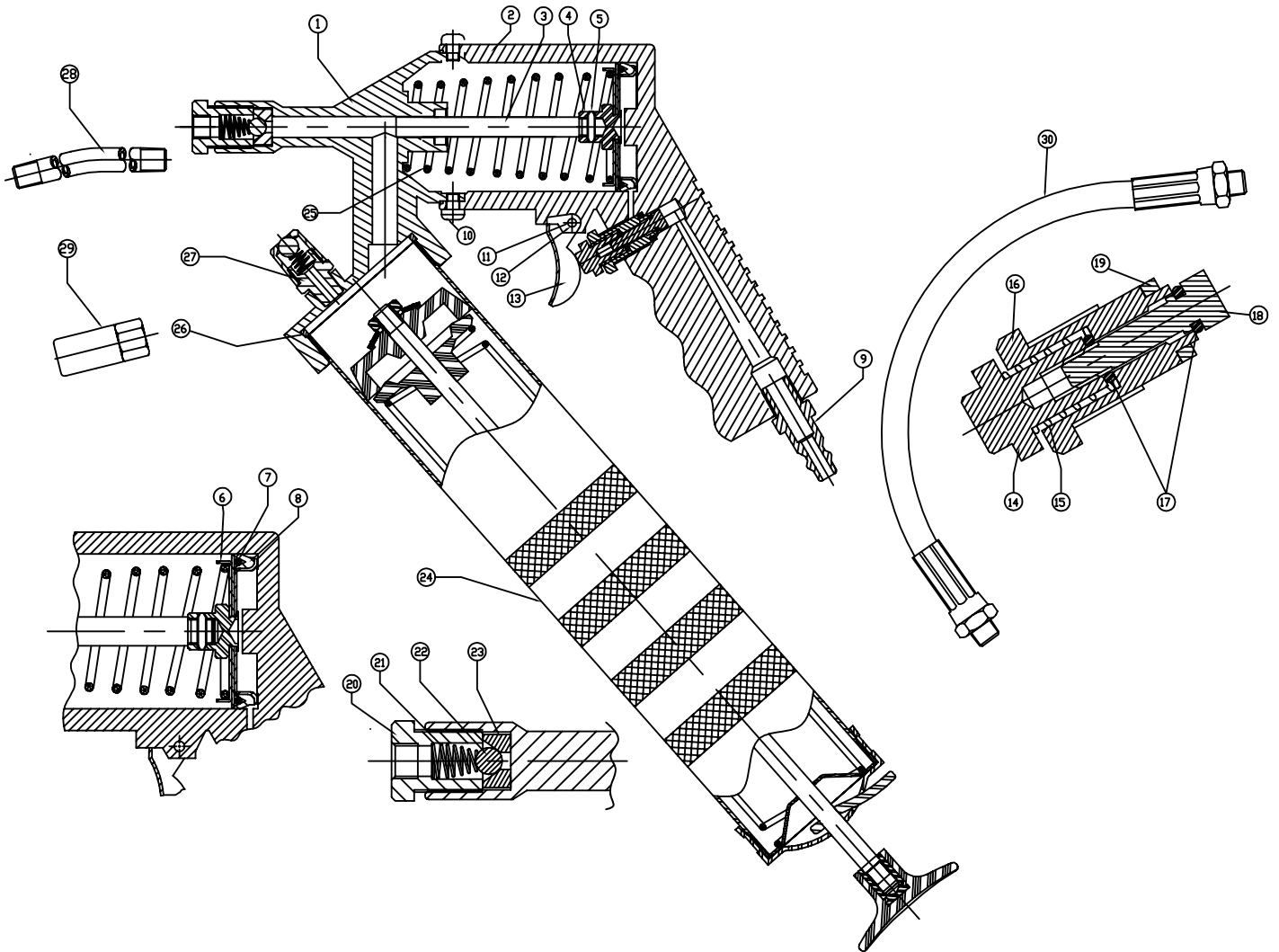
GREASING A GREASE FITTING / GREASE NIPPLE

The grease coupler provided at the end of the grease gun extension has a jaw type construction. The coupler jaws will snap on to a grease fitting and maintain a tight fit. When connecting the coupler to the grease fitting, press the coupler straight onto the grease fitting to form a snug fit. Start operating the grease gun with the coupler as square to the grease fitting as possible. Once greasing is completed, slightly tilt the coupler, twist and pull back. The tilt and twist action will allow easy removal of the coupler from the grease fitting.



MAINTENANCE

Grease guns and hoses should be kept clean and checked for damage before each use. Use an air supply system that incorporates a filter, regulator, and lubricator, or add a few drops of lubricator oil (SAE 30 or greater) through the gun's air supply quick connect fitting in the die cast handle.

EXPLODED VIEW

PART LIST

S.NO.	ART. NO.	PART NAME	QTY
1	HD/PGG	HEAD	1
2	BDY/PGG	BODY	1
3	PST/AGG	PISTON	1
4	ADP/PST/AGG	ADAPTER	1
5	SSP/3.0X0.6X10.0	SLOTTED SPRING PIN	1
6	HLD/DRG/PGG	O-RING HOLDER	1
7	DRG/BS223	O-RING	1
8	DRG/A/PGG	O-RING	1
9	IV/PGG	INLET VALVE	1
10	SCR/M5/PGG	SCREW (M5)	4
11	SCR/M3/PGG	SCREW (M3)	1
12	NN/M3/PGG	NYLOCK NUT	1
13	HND/TRG/PGG	TRIGGER	1
14	PB/TRG/PGG	PUSH BUTTION	1
15	SPR/TRG/PGG	SPRING TRIGGER	1

S.NO.	ART. NO.	PART NAME	QTY
16	SEL/TRG/PGG	SEAL	1
17	ORG/TRG/PGG	O-RING	2
18	HLD/ORG/TRG/PGG	O-RING HOLDER	1
19	WSR/R/TRG/PGG	RUBBER WASHER	1
20	BDY/NR/PGG	NON-RETURN VALVE BODY	1
21	SPR/KB22/K45	OUTLET SPRING	1
22	SB/5-16	STEEL BALL	1
23	SET/NRT/PGG	SEAT	1
24	SA/BRL/PGG/DL/BL1	BARREL ASSY.	1
25	SPR/PST/PGG-SPL	PISTON SPRING	1
26	WSR/R/G-2	RUBBER WASHER	1
27	SA/BLV-02V	BULK LOADER VALVE	1
28	GBP/6	GREASE BEND PIPE 6"	1
29	SA/HC/18/4	COUPLER ASSY	1
30	SA/GHC-12	GREASE HOSE	1

TRIGGER KIT PART LIST

S. NO.	PART NAME	REFERENCE PART # FROM PART LIST	SUPPLY CONDITION
KIT/TRG/AGG			
1	Push button	14	As set
2	Spring Trigger	15	
3	Seal	16	
4	O-Ring	17	
5	O-ring holder	18	
6	Rubber Washer	19	Loose

TRIGGER ASSEMBLY KIT

1. Open the Grease gun Barrel by rotating the barrel anti-clockwise



2. Place the Head & Body assembly over bench vice and align the trigger nut with allen bolt



3. Using a screwdriver, open the trigger bolt by rotating it anti-clockwise



4. Remove the trigger clip and kept it aside



5. Now open the Trigger assembly using a spanner of size 16mm and take the trigger assembly out



6. Take out the constituents from the pouch i.e. rubber washer (19) & Trigger assembly



7. Place the Rubber washer (19) onto the trigger assembly as shown in figure



8. Insert the Trigger assembly back into the Trigger Cavity



Note: Threaded connections must be tight & leak proof

9. Tight the trigger assembly using a spanner of 16mm



10. This completes the replacement of trigger kit.

PISTON KIT PART LIST

S. NO.	PARTS DESCRIPTION	QTY.	REFERENCE PART # FROM EXPLODED VIEW	SUPPLY CONDITION
KIT/PST/PGG				
1	O-Ring Holder	1	6	Assembled
2	O-Ring	1	7	
3	O-Ring	1	8	
4	Slotted Spring Pin	1	5	
5	Piston	1	3	
6	Adaptor	1	4	
7	Spring	1	25	

PISTON REPAIR KIT

1. Open the 4 screws using Phillips screwdriver to disassemble the head & body and cautiously open the 4th screw



2. Safely open the body & head assembly, due to presence of tension spring inside it.



3. Take out the spring from gun body



4. Take out the piston assembly with your hand.



5. Take out the kit constituents from the pouch, i.e. Piston assembly, spring



6. Insert the piston assembly back into the body



7. Place the spring (25) over piston assembly



8. Now align the holes of gun head & body by pushing them towards each other and insert 4 screws into the holes and tighten it.



9. This completes the replacement of Trigger assembly.

NON RETURN VALVE KIT PART LIST

S. NO.	PARTS DESCRIPTION	QTY.	REFERENCE PART # FROM PART LIST	SUPPLY CONDITION
KIT/NRV/PGG/N				
1	Non-Return Valve Body	3	20	Loose
2	Outlet Spring	1	21	Loose
3	Steel Ball (5/16")	1	22	Loose
4	Seat	1	23	Loose

NON RETURN VALVE KIT

1. Unscrew the Coupler & Steel Extension from the Head Assembly using 17 mm spanner



2. Unscrew the Non-return Valve using 16 mm spanner and take the Non Return Valve body (20) & Outlet spring (21) out



3. Tap the grease gun's outlet on a surface to take out the steel ball (22) & seat (23)



4. Take out the kit constituents from pouch i.e. Non-Return valve body, Outlet Spring, Steel ball, Seat.



5. Insert the Seat (23) & Steel ball (22) back into the grease gun outlet passage in the same manner as shown in image



6. Put Spring (2) back into the Non- Return valve body by keeping larger mouth of spring inward and tighten the spring & body assembly into the head by using 16 mm spanner



7. This completes the replacement of Non- Return valve



TROUBLESHOOTING

PROBLEM	CAUSE	SOLUTION
Grease gun pumps little or no grease.	<ol style="list-style-type: none"> 1. Barrel not completely tightened. 2. Air Pockets are trapped in grease. 3. Blocked grease gun extension. 4. Grease too thick or cold. 	<ol style="list-style-type: none"> 1. Tighten the barrel completely. 2. Prime grease gun as detailed in instructions. 3. Remove the extension and operate the grease gun. If the gun dispenses grease then the gun is fine and you need to either clean the extension or replace it. 4. Store grease gun and grease away from extreme cold or use thinner grease.
Excessive grease leaking past the follower.	<ol style="list-style-type: none"> 1. Follower is damaged. 2. Improper seal between the plunger and the grease gun barrel when using bulk fill or transfer pump 	Replace the grease gun.
Gun cycles very slowly	Inadequate lubrication of the pumping chamber	Put a few drops of lubricator oil through the quick connect coupler fitting
If the gun still doesn't operate		Contact nearest authorized service dealer

GROZ WARRANTY POLICY

Groz makes all efforts to ensure that its products meet the highest standards of quality and durability and warrants to the original purchaser its range of products for a period of 12 months from Groz Invoice date, against defects in materials and workmanship. If the Groz product is part of a set, only the portion that is defective is subject to this warranty.

This warranty does not apply to damage due directly or indirectly, to misuse, abuse, wear and tear, negligence or accident, repairs or alterations outside Groz plants, or to lack of maintenance. Groz shall in no event be liable for death, injuries to persons or property or for incidental, contingent, special or consequential damages arising from the use of its products. It is upto the user to determine suitability and safety of the product for their intended use, and the user assumes all risks and liability herewith.

In no event, shall Groz's liability exceed the invoiced cost of the product. In case of identification of defect covered under this warranty, the same must be notified in writing to Groz /Groz designated authorized service location. Proof of purchase date must accompany the complaint. Groz reserves the right to call back the faulty unit, all charges including transportation prepaid. On verification of the defect, the unit will be repaired or replaced with a new or reconditioned product or part of equal utility or a full refund given at Groz's discretion. The repaired /replaced units will be returned to the user freight prepaid, using most economical freight carrier. However if determined that the defect resulted from causes not within the scope of the warranty, then the cost of returning the product would be to buyer's account.

Groz Engineering Tools (P) Ltd. Groz Net Industries

Village Kherki Daula, National Highway-8,
Gurgaon-122001, Haryana, INDIA

Tel +91.124.282.7734/40, 2827777
Fax +91.124.2827980, 2827986
E-Mail info@groz-tools.com
Url www.groz-tools.com

The GROZ name, GROZ logo and the  mark are trademarks of Groz Engineering Tools (P) Ltd., India