

Underhood Light Magnetic Ends

LED-355

CE
RoHS
IK07



Slim & compact 10W COB underhood light, shines brighter & lasts longer

Light Output

Single button, user controlled light output

	1ST PRESS	2ND PRESS
	HIGH	LOW
LUMEN	1000	400
RUN TIME	2 hrs	5 hrs



Sturdy Construction IK07 Rated

- Impact resistant ABS body built to withstand the toughest environments
- 360° swivelling hooks resist wear and provide a scratch-proof grip
- Sturdy polycarbonate lens withstands tough jobsite conditions
- Light can be rotated easily to direct beam on the job, as required



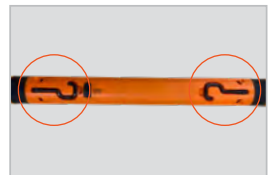
Hands free: Strong magnets on both ends attach onto metallic surfaces leaving both hands free

Hands Free Operation

Strong magnets on both ends for easy attachment on any metallic surface leaving both hands free.



Type C Charging Port



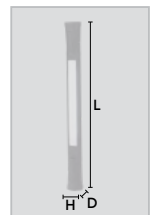
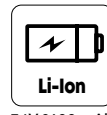
360° Swivelling Hooks

Charging of Battery

- Type-C fast charging protected by rubberized bezel.
- Charge indicated via 4 LED's, each showing 25% charge
- Comes complete with USB cable

CAT NR.	SIZE	
	(INCH)	(MM)
LED/355	19-11/16 × 1-31/32 × 1-39/64	500 × 50 × 41

POWER SOURCE



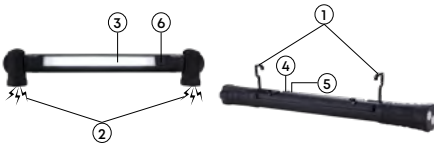
SAFETY INFORMATION

- Keep the work area clean and dry. Damp or wet work areas can result in injury.
- Check for damaged parts and any other conditions that may affect the operation of this product. Replace damaged parts immediately
- Do not use the lamp in the immediate vicinity of inflammable materials or gases.
- Only use the accessories included with the product.
- Keep the lamp out of reach of unauthorized persons, especially children.
- Do not point the light directly in your own or any other person's or animal's eyes.
- Do not attempt to open the battery compartment.

PACKAGING CONTENT

DESCRIPTION	QUANTITY
Light	1
Type C charging cable	1

NOMENCLATURE



1. 360° swivelling hooks
2. Magnets
3. 10W COB
4. Type C charging port
5. LED's charge indicator
6. ON/OFF button

OPERATING INSTRUCTIONS

(Refer "NOMENCLATURE")

Charging:

- Charge the worklight with the provided Type C cable

- Charging will take 4.5 hours. When the battery is fully charged, all four LED's will be lit.
- Now the light is ready for use.
- Fully charge the battery before the first use.

Operation:

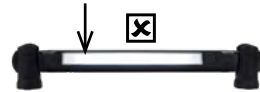
- To switch ON the light press the button at the side of the unit for 1000 lumen output.
- Press the button once for 400 lumen output.
- Press the button twice to switch off the light.

MAINTENANCE

- Before cleaning the LED work light, disconnect the USB cable (if being charged) and allow the work light to cool down sufficiently.
- Clean with a dry clean, lint free cloth.
- Check the LED work light for damage before each use. If the lens is damaged it must be replaced immediately.
- Clean any dirt from the housing or the lens immediately, since it could cause overheating.

INSTRUCTIONS FOR PROPER USE OF UNDERHOOD LIGHT

- Light should not be bended in any direction as it puts pressure onto the hooks and it can get damaged.
- Avoid putting any horizontal force onto the light as it can damage the light.



- While removing the light from the vehicle, hold the light firmly and ensure that the light is taken out slowly to avoid any damage at its ends.

DISPOSAL

The components or the used products must be given to companies that specialize in the disposal and recycling of industrial waste.

Groz Engineering Tools Pvt. Ltd.
Groz Net Industries

Village Kherki Daula, National Highway-8,
 Gurugram-122001, Haryana, INDIA

Tel +91.124.282.7700

E-Mail info@groz-tools.com

Url www.groz-tools.com

The GROZ name, GROZ logo and the  mark are trademarks of GROZ Engineering Tools Pvt. Ltd., India