



A Tradition of Innovation.



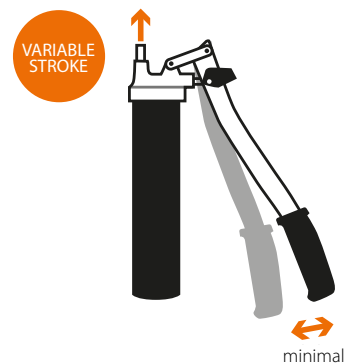
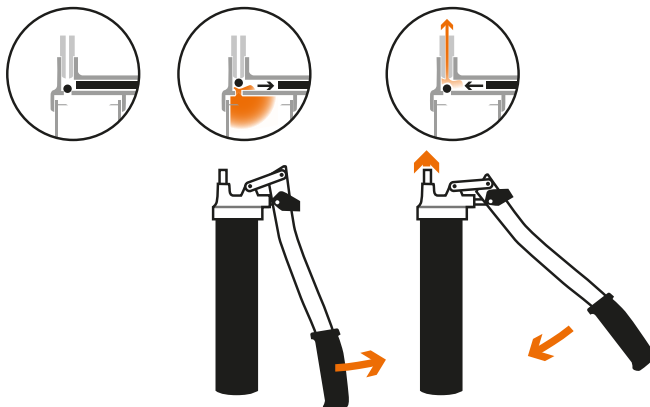
The new **easyFILL 400** works without the need of any spring mechanism. Simply insert the cartridge, insert the follower plate and get started. The vacuum in the grease gun head moves the piston smoothly upwards all by itself. Through the Variable Stroke principle the grease gun can be easily operated with minimal lever movement.

- Pressure: 400 bar
- For any 400 g commercial grease cartridge in accordance with DIN 1284
- Variable stroke - grease supply already at minimal lever movement
- Cartridge can be refilled with the PRESSOL filling adapter
- Ergonomic handle, slip-proof, optimum power transfer and handling

Innovative lubrication technology made by PRESSOL.



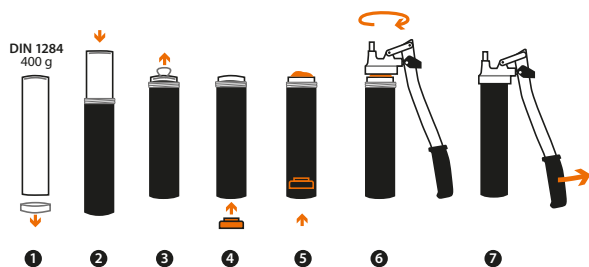
Grease with ease. The new **easyFILL 400**



www.pressol.com



Insert, screw in – go!



- 1 Remove cartridge cap
- 2 Insert cartridge into the grease gun tube
- 3 Open pull-off cap
- 4 Insert follower plate into the cartridge from the bottom
- 5 Press follower plate lightly until excess fat emerges (pull-off side)
- 6 Screw in the grease gun tube including the cartridge into the grease gun head
- 7 Slowly initiate the grease gun

easyFILL 400

- 14 600** easyFILL 400 without accessories M 10 × 1
- Follower plates 10 pieces (14 900)
- 14 600 001** easyFILL 400 with accessories M 10 × 1
- High pressure hose incl. pressed seal, 11 × 300 mm (12 655 828)
 - Tight-fitting precision coupler (12 643)
 - Follower plates 10 pieces (14 900)
- 14 601** easyFILL 400 without accessories G 1/8"
- Follower plates 10 pieces (14 900)
- 14 601 001** easyFILL 400 with accessories G 1/8"
- High pressure hose incl. pressed seal, 11 × 300 mm (12 755 828)
 - Tight-fitting precision coupler (12 743)
 - Follower plates 10 pieces (14 900)

easyFILL ONE 400

- 14 700** easyFILL ONE 400 without accessories M 10 × 1
- Follower plates 10 pieces (14 900)
- 14 700 001** easyFILL ONE 400 with accessories M 10 × 1
- High pressure hose incl. pressed seal, 11 × 300 mm (12 655 828)
 - Tight-fitting precision coupler (12 643)
 - Follower plates 10 pieces (14 900)
- 14 700 002** easyFILL ONE 400 with accessories M 10 × 1
- Spout 150 mm (12 435)
 - Tight-fitting precision coupler (12 643)
 - Follower plates 10 pieces (14 900)
- 14 701** easyFILL ONE 400 without accessories G 1/8"
- Follower plates 10 pieces (14 900)
- 14 701 001** easyFILL ONE 400 with accessories G 1/8"
- High pressure hose incl. pressed seal, 11 × 300 mm (12 755 828)
 - Tight-fitting precision coupler (12 743)
 - Follower plates 10 pieces (14 900)
- 14 701 002** easyFILL ONE 400 with accessories G 1/8"
- Spout 150 mm (12 475)
 - Tight-fitting precision coupler (12 743)
 - Follower plates 10 pieces (14 900)

Accessories

- 14 900** Follower plates for 400 g cartridge, DIN 1284
- 12 305** Filling adapter for 400 g cartridges

Grease Cartridges

- 12 511** Multipurpose grease cartridge NLGI 2
- 12 514** Multipurpose grease cartridge NLGI 2 with integrated follower plate



14 600 001

VARIABLE
STROKE



14 700

Easily switch between
high volume and high pressure
via the handle



12 305

www.pressol.com



PRESSOL Schmiergeräte GmbH

Am Gansacker 10 C · 79224 Umkirch | Deutschland
Tel.: +49 7665 9346-0 · Fax: +49 7665 9346-130
E-Mail: info@pressol.com · www.pressol.com